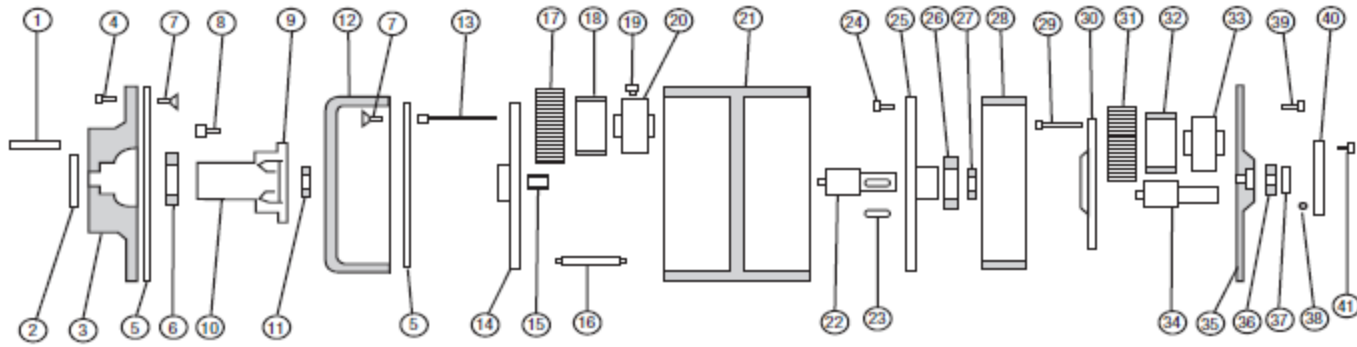


Rev Tech LC - Aftermarket Parts for SA-56 | SA-57 Gearbox

Item #	Part #	Description	Qty	List	Whs	Mfg
2	122900	Oil Seal	1	\$85	\$70	\$55
6	N/A	Bronze Bearing, Spline End	1	N/A	N/A	N/A
6A	122201	Bearing NJ 220M	1	\$875	\$725	\$605
10-A	120101	Spline Shaft	1	\$2,400	\$1,975	\$1,650
11	122500	Bearing 6216M	1	\$460	\$385	\$320
11A	N/A	Bronze Bearing, 2nd Ring Gear	1	NA	N/A	N/A
12	121400	2nd Stage Ring Gear	1	\$7,950	\$6,895	\$5,650
15	N/A	Bronze Bearing	1	NA	N/A	N/A
15-A	122700	Bearing 2305	1	\$125	\$105	\$88
17	121300	2nd Stage Planet Gear	2	\$1,450	\$1,225	\$995
18	121500	2nd Stage Axle	2	\$495	\$415	\$345
22	121200	2nd Stage Pinion	1	\$1,050	\$850	\$695
26	122500	Bearing 6216M	1	\$440	\$370	\$320
27	122800	Bearing 6404	1	\$78	\$66	\$55
28	171102	1st Stage Ring Gear 39:1	1	\$3,595	\$2,975	\$2,550
28-A	171103	1st Stage Ring Gear 82:1	1	\$3,595	\$2,975	\$2,550
28-B	171101	1st Stage Ring Gear 27:1	1	\$4,675	\$3,850	\$3,200
31	171302	1st Stage Planet Gear 39:1	2	\$1,425	\$1,150	\$925
31-A	171303	1st Stage Planet Gear 82:1	2	\$1,425	\$1,150	\$925
31-B	171301	1st Stage Planet Gear 27:1	2	\$1,425	\$1,150	\$925
32	120802	1st Stage Bronze Journal 39:1	2	\$350	\$285	\$235
34	120501	1st Stage Pinion 39:1	1	\$750	\$610	\$495
34-A	120502	1st Stage Pinion 82:1	1	\$685	\$550	\$450
34-B	120503	1st Stage Pinion 27:1	1	\$995	\$800	\$650
36	122600	Bearing 6206M	1	\$125	\$100	\$80
37	123000	Oil Seal	1	\$25	\$20	\$15

1/1/2019

* Rev Tech LC is an independent centrifuge gearbox part supplier for various OEM companies and is not affiliated with these OEM companies.



Item#	Part#	Description	Qty	Item#	Part#	Description	Qty
1	N/A	Stud 1"-8 x 3-3/4"	8	24	171001	SHCS 3/8" - 16 x 1 -1/4"	16
2	170200	Oil Seal	1	25	N/A	1st Stage Housing	1
3	N/A	Inside Cover	1	26	172000	Bearing 6216	1
4	170601	SHCS 1/2"- 13 x 1 1/4"	24	27	172100	Bearing 6404	1
5	170500	Bronze Thrust Washer	2	28	171102	1st Stage Ring Gear 39:1	1
6	170300	Bearing NU 1036	1	28A	171103	1st Stage Ring Gear 82:1	1
7	170501	FH SHCS 1/4"- 20 x 5/8"	16	28B	171101	1st Stage Ring Gear 27:1	1
8	172801	SHCS 3/4"- 10 x 1 -1/4"	20	29	172701	SHCS 3/8" -16 x 3 - 1/2"	8
9	N/A	Spline Shaft Hub	1	30	N/A	1st Stage Gear Plate	1
10	170100	Spline Shaft 3.5"	1	31-A	171302	1st Stage Planet Gear 39:1	2
10-A	170101	Spline Shaft 4"	1	31-B	171302H	1st Stage Planet Gear 39:1 High Speed	2
11	173000	Bearing NU6216E	1	31-C	171303	1st Stage Planet Gear 82:1	2
12	170800	2nd Stage Ring Gear	1	31-D	171301	1st Stage Planet Gear 27:1	2
13	172401	SHCS 3/8" - 16 x 5 - 1/2"	14	32	171400	1st Stage Bronze Bearing	2
14	N/A	2nd Stage Gear Plate	1	32-A	171400H	1st Stage Bronze Bearing High Speed	2
15	173100	Bearing BR 243320	1	33	N/A	1st Stage Axle	2
15A	N/A	Bronze Bearing	1	34	171702	1st Stage Pinion 39:1	1
16	N/A	Support	2	34A	171703	1st Stage Pinion 82:1	1
16A	N/A	Support	2	34B	171701	1st Stage Pinion 27:1	1
17	172600	2nd Stage Planet Gear	2	35	N/A	Outside Cover	1
18	172500	2nd Stage Bronze Bearing	2	36	171900	Bearing 6407	1
19	172501	SHCS 3/8" - 16 x 1/2"	4	37	171800	Oil Seal	1
20	N/A	2nd Stage Axle	2	38	171500	O' Ring 241 H70	1
21	N/A	Gear Case	1	39	171201	SHCS 3/8" - 16 x 1 - 1/4"	24
22	172200	2nd Stage Pinion	1	40	171600	Bearing Cap	1
22-A	172201	2nd Stage Pinion High Speed	1	41	171601	SHCS 5/16" - 18-1"	6
23	N/A	Key	1				

* Rev Tech LC is an independent centrifuge gearbox part supplier for various OEM companies and is not affiliated with these OEM companies.