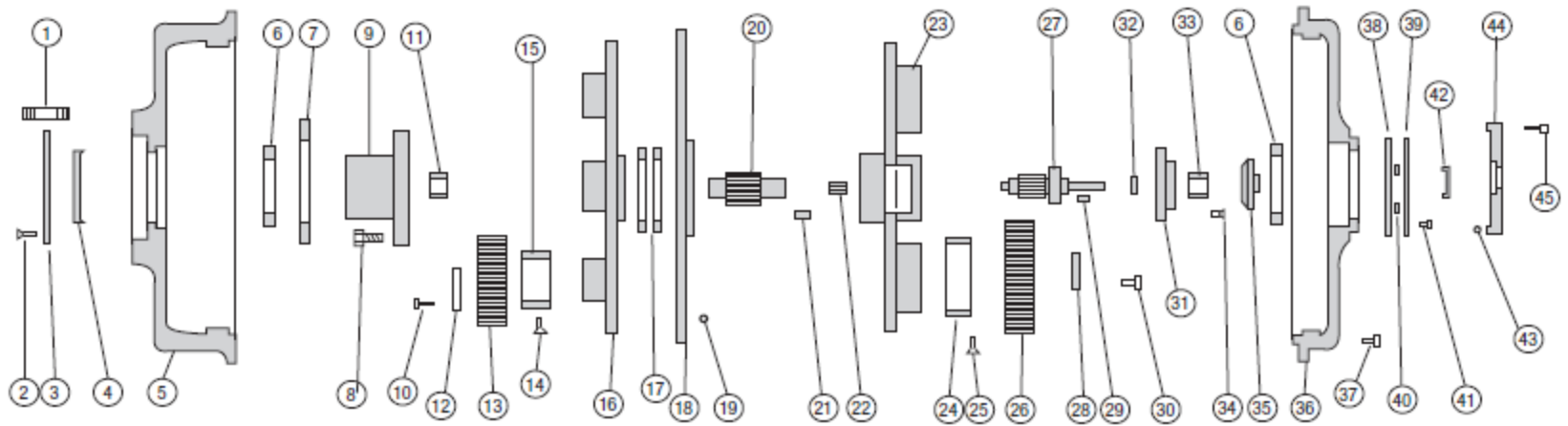


Rev Tech LC - Aftermarket Parts for SA-70 Gearbox



| Item# | Part# | Description | Qty | Item# | Part# | Description | Qty |
|-------|--------|---------------------------------|-----|-------|--------|-----------------------------------|-----|
| 1 | N/A | Stud 1"- 8 x 3/4" | 8 | 26-B | N/A | 1st Stage Planet Gear 82:1 | 2 |
| 2 | 190200 | FH SHCS 1/4" - 20 x 1" | 6 | 26-C | N/A | 1st Stage Planet Gear 116:1 | 2 |
| 3 | N/A | Seal Retainer | 1 | 27 | N/A | 1st Stage Pinion 22:1 | 1 |
| 4 | 190400 | Oil Seal | 1 | 27-A | N/A | 1st Stage Pinion 39:1 | 1 |
| 5 | N/A | 2nd Stage Ring Gear | 1 | 27-B | N/A | 1st Stage Pinion 82:1 | 1 |
| 6 | 190600 | Bronze Centerline Bearing | 2 | 27-C | N/A | 1st Stage Pinion 116:1 | 1 |
| 7 | 190700 | Bronze Thrust Washer | 1 | 28 | N/A | Retainer | 2 |
| 8 | 190800 | SHCS 3/4" -16 x 1-1/4" | 6 | 29 | N/A | Key | 1 |
| 9 | 190900 | Spline (Coarse) | 1 | 30 | 191000 | Cap Screw 3/8" - 16 x 5/8" | 6 |
| 9-A | N/A | Spline (Fine) | 1 | 31 | N/A | Bearing Retainer | 1 |
| 10 | 191000 | Cap Screw 3/8 -16 x 5/8" | 9 | 32 | 193200 | Snap Ring 5100 - 125 | 1 |
| 11 | 191100 | Bronze Bearing (Spline) | 1 | 33 | 193300 | 1st Stage Bronze Retainer Bearing | 1 |
| 12 | N/A | Retainer | 3 | 34 | 193400 | SHCS 1/2" - 13 x 7/8" | 4 |
| 13 | N/A | 2nd Stage Planet Gear | 3 | 35 | 193500 | Bronze Oil Pump Bushing (Tapered) | 1 |
| 14 | 191400 | FH SHCS 7/16" -14 x 3/4" | 3 | 35-A | 193501 | Bronze Oil Pump Bushing (Square) | 1 |
| 15 | 191500 | 2nd Stage Bronze Gear Bearing | 2 | 36 | N/A | 1st Stage Ring Gear 22:1 | 1 |
| 16 | N/A | 2nd Stage Cage (3-Gear) | 1 | 36-A | N/A | 1st Stage Ring Gear 39:1 | 1 |
| 16-A | N/A | 2nd Stage Cage (2-Gear) | 1 | 36-B | N/A | 1st Stage Ring Gear 82:1 | 1 |
| 17 | 191700 | Bronze Center Plate Bearing | 2 | 36-C | N/A | 1st Stage Ring Gear 116:1 | 1 |
| 18 | N/A | Center Plate | 1 | 37 | 193700 | SHCS 3/8" - 16 x 1 1/2" | 15 |
| 19 | 191900 | O'Ring 471 H70 | 1 | 38 | N/A | Inner Disc | 1 |
| 20 | N/A | 2nd Stage Pinion | 1 | 39 | N/A | Outer Disc | 1 |
| 21 | N/A | Key | 1 | 40 | N/A | Spacer | 4 |
| 22 | 192200 | 1st Stage Bronze Pinion Bearing | 1 | 41 | 194100 | BH SHCS 1/4" - 20 x 3/8" | 4 |
| 23 | N/A | 1st Stage Cage | 1 | 42 | 194200 | Oil Seal | 1 |
| 24 | 192400 | 1st Stage Bronze Gear Bearing | 2 | 43 | 194300 | O'Ring 450 H70 | 1 |
| 25 | 192500 | FH SHCS 7/16" -14 x 3/4" | 2 | 44 | N/A | Cover | 1 |
| 26 | N/A | 1st Stage Planet Gear 22:1 | 2 | 45 | 194500 | SHCS 1/4" - 20 x 7/8" | 8 |
| 26-A | N/A | 1st Stage Planet Gear 39:1 | 2 | | | | |

* Rev Tech LC is an independent centrifuge gearbox part supplier for various OEM companies and is not affiliated with these OEM companies.