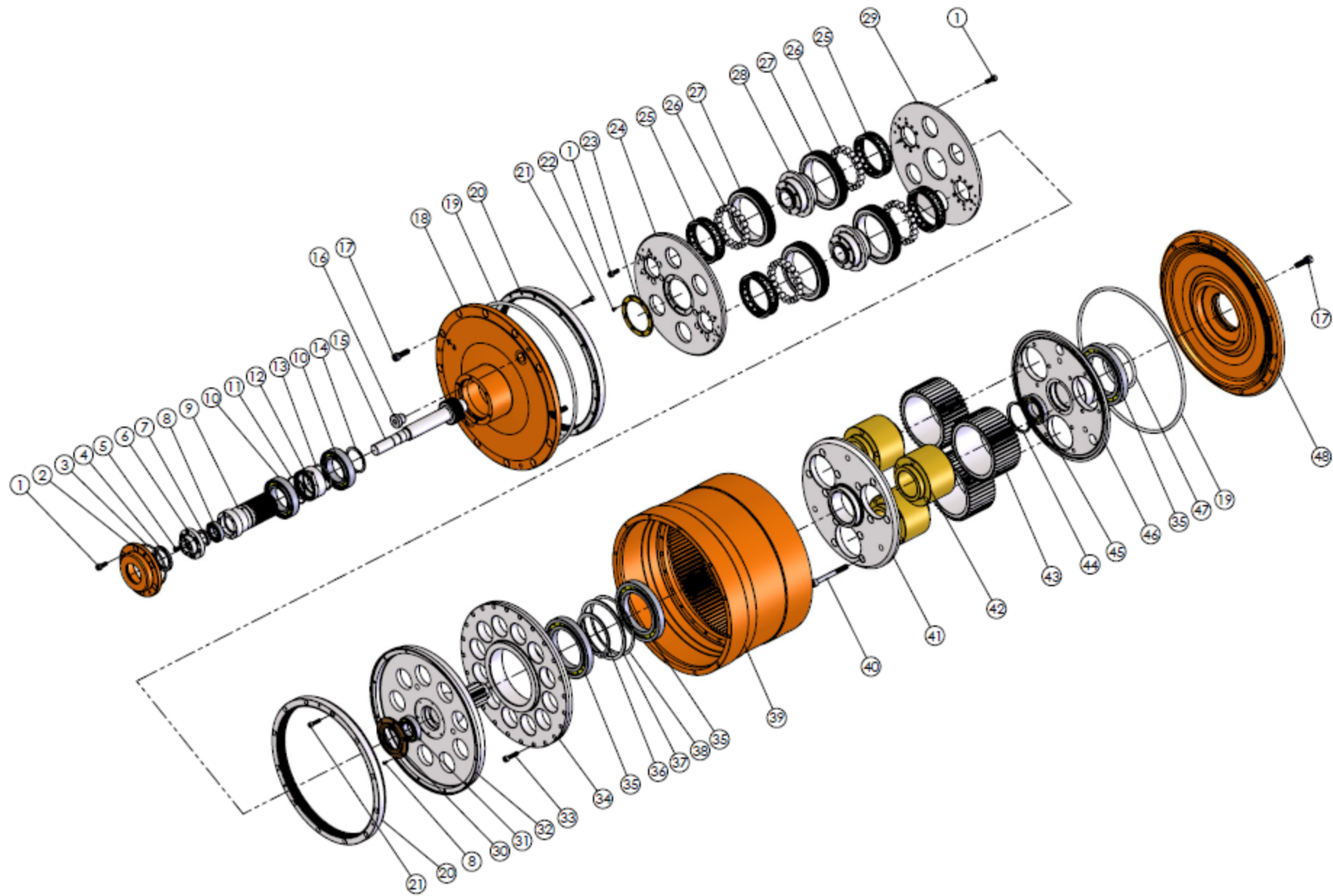


# Rev Tech LC - Aftermarket Parts for 3.5 DD Gearbox



Item#	Part#	Description	Qty	Item#	Part #	Description	Qty
1	350100	SHCS 6 x 1 x 14	30	26	352201	Roller	76
2	350200	Seal Cap	1	27	352100	DD Planet Gear	4
3	350300	O' Ring 69.5 X 3 FKM	1	28	352300	Shaft	2
4	350400	Oil Seal	1	29	351603	Gear Plate	1
5	350700	SHCS LP M5 x .8 x 10	6	30	351602	Thrust Ring W/Pilot	1
6	351001	Pinion Cap	1	30-A	352600	Snap Ring 5000-185	1
7	350600	Oil Seal	1	31	352700	Bearing 6005	1
8	350500	Bearing 61904	1	32	352800	Inner Plate w/Pinion	1
9	351000	Pinion Hollow	1	33	353000	SHCS M6 x 1 x 25	12
10	350900	Bearing 6009	2	34	352900	Center Plate	1
11	351200	O' Ring 46.3 X 3 NBR	1	35	353100	Bearing 16015	3
12	351100	Spacer w/Oil Scoop	1	36	353200	Spiral Lock DSH-75ST	1
13	351201	O' Ring 47.35 X 1.78 NIT	1	37	353300	Spacer	1
14	352400	Spiral Lock DSH-45ST	1	38	353400	Wavy Spring	1
15	351300	Pinion	1	39	353500	Housing	1
16	160900	Oil Plug	2	40	353900	SHCS M8 x 1.25 x 75	12
17	354600	SHCS M6 x 1 x 25	24	41	353600	2nd Stage Outer Plate	1
18	351400	Outside Cover	1	42	353700	2nd Stage Axle	3
19	351800	O' Ring 269.3 x 5.7 FKM	2	43	353800	2nd Stage Planet Gear	3
20	351700	DD Ring Gear	2	44	354200	Spiral Lock DHO-55ST	1
21	351500	SHCS M5 x .8 x 20	24	45	354100	Bearing 16006	1
22	350800	FSHCS M3 x 6	14	46	354000	2nd Stage Inside Cover w/Spline	1
23	351601	Outside Bronze Thrust Ring (OEM)	1	47	354400	O' Ring 74.3 X 5.7 FKM	1
24	351600	Gear Plate (OEM)	1	48	354500	Inside Cover	1
25	352200	Cage	4				